

S.E. 1/4
SECTION 20, T.6N., R.2W., S.L.B. & M.

IN WEBER COUNTY
SCALE 1" = 200'

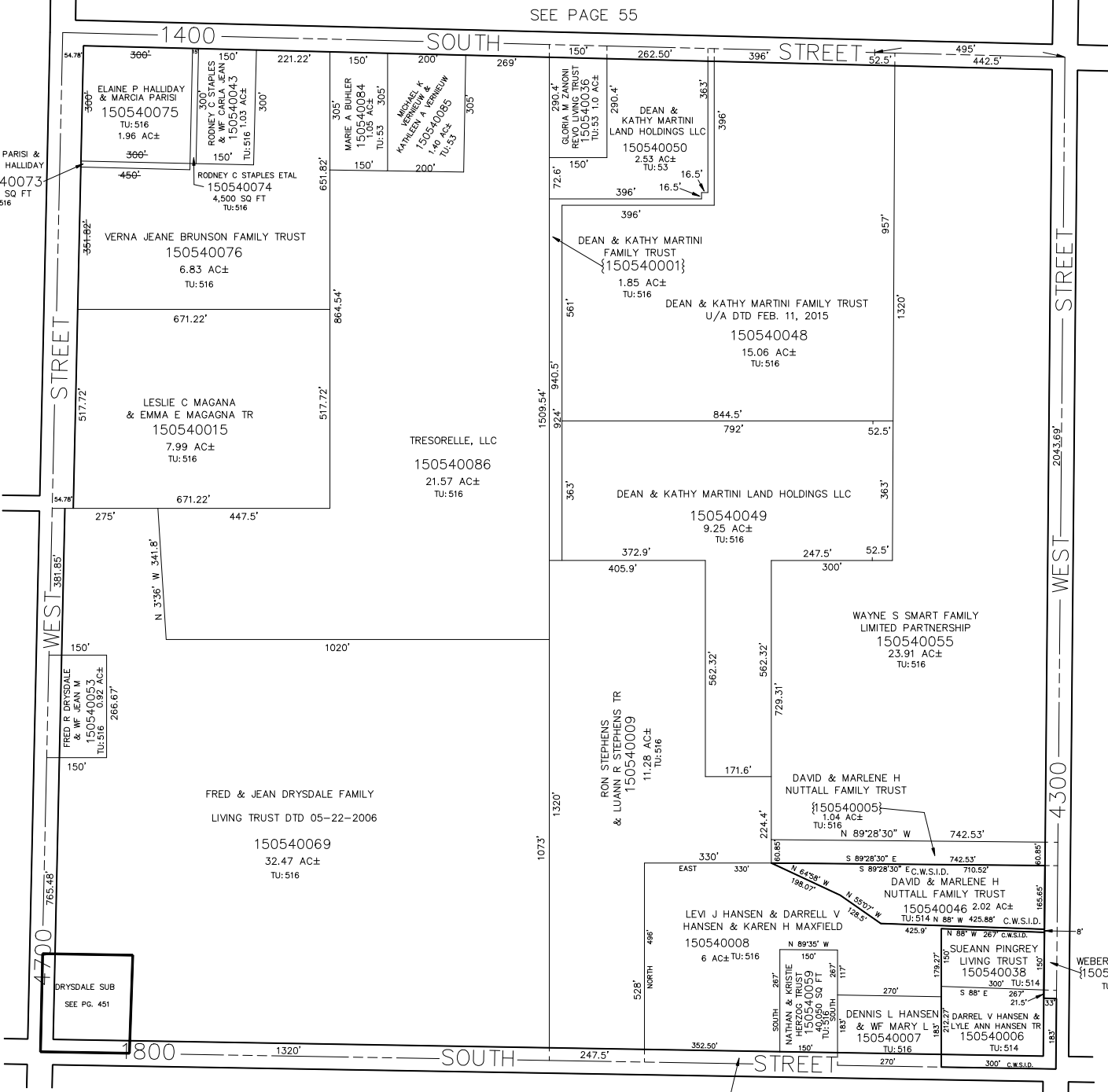
TAXING UNIT: 377,514,516

SEE PAGE 55

MARCIA PARISI &
ELAINE P HALLIDAY
150540073
4,500 SQ FT
TU:516

SEE PAGE 56

SEE PAGE 57



SEE PAGE 80

WEBER COUNTY
{150540041}